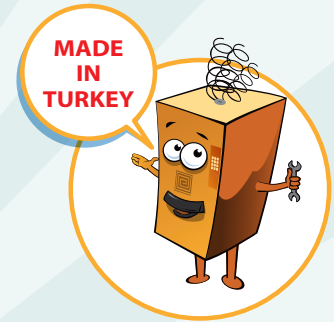


**She sells,  
You earn!**<sup>®</sup>

**Tru-VEND<sup>®</sup>**

SALES & SERVICE VENDING MACHINES

## MIDI-BUFFET<sup>®</sup> SlimLine



10 SELECTIONS!!  
TOUCH KEYPAD  
Payment Systems (Optional)  
CHANGE GIVER  
COIN SELECTOR  
CASHLESS PAYMENT SYSTEMS

BILL VALIDATOR  
ALARM AGAINST VANDALISM  
EASY PRODUCT LOADING  
WALL-MOUNT OR STAND ALONE WITH BASE ASSEMBLY  
GSM/GPRS TELEMETRY SYSTEM (OPTIONAL)

AVAILABLE WITH COOLING OR HEATING MODULE  
BEST FOR SMALL LOCATION VENDING  
IR PRODUCT DELIVERY SENSORS  
LED INDICATION FOR DISPENSED PRODUCTS  
SUPERIORITIES NOT SEEN ELSEWHERE!!



# FEATURES

- International norms, In conformity with CE Norms and produced under ISO 9001: 2008 QMS.
- 16-bit high performance Micro-processor controlled, EVA-DTS, MDB- Executive protocols supported
- Compatible with all currencies
- Multi-Selection Snack Vending Machine with Product Display Window
- Adjustable Illumination
- User Friendly Graphical LCD
- Guaranteed vending, happy customers! Prevents failure vends by latest IR sensing technology which guarantees customers the product or cash return
- Easy Product Loading
- Capacitive Touch Keypad & Anti-Vandalism Weatherproof Metallic Keypad for Outdoor applications (Optional)
- Real Time Time/Date Function Enabling Timetable Pricing (Happy Hours)
- Effective Electronic thermostat controlled energy efficient cooling feature providing long product life (Cooling Optional)
- Pre-set timetabled Power Saving Mode with programmable low temperature level
- Optional LCD for Digital Advertisement
- User Friendly Customer Interface and Control Menu
- High storage capacity EEPROM for storage of settings and statistics, 8 Mbit Flash Memory to keep LOG info
- GSM/GPRS Web Based Remote Access and Data Transfer (Telemetry) - Optional
- Remote Data Transmission to PC via RS232 cable connection interface for Master-Slave Operation (Optional)
- Firmware Update Availability with Boot-loader for GPRS Modem Equipped Machines
- BITE (Built-in Test Equipment) automatically Fixing problems and/or Warning Messages on LCD and error data in memory
- Enhanced Motor Control System enabling detailed functional control
- Data Transmission to USB Flash Memory with USB Host Mode (Optional)
- Adjustable Tray Selections enabling Production as per Customers requisites
- Compact Design Slim Line Small Location Vending Machine
- Easy Selection Pricing Feature
- 4 Digit PIN Code and 2-level password (Admin/Operator) Protected Menu Entry
- Large Dispensing Hole (140 mm) and Self Locking Swinging Product Dispensing Slot
- Corrosion-resistant production material
- Robust Steel Cabinet
- Project based quantity orders for custom made special vendors

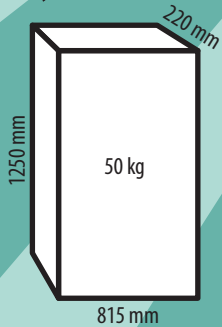
## BATTERY OPERATED/LOW POWER MAINBOARD

- Fully Microprocessor Controlled MDB and EXECUTIVE protocols supporting Change Giver, Coin Selector, Bill Validator and Cashless Payment Systems.
- Wake Up from Sleep Mode when Coin inserted with its advanced Low Power MDB System Special Payment Systems and Electronic Circuitry
- Maximum 14 Selections
- Ensures reliable operation with IR Product Sensor
- Graphical LCD
- 3x4 User Friendly Capacitive Keypad & Anti-Vandalism Weatherproof Metallic Keypad for Outdoor applications (Optional)
- Real Time Time/Date Function Enabling Timetable Pricing
- User Friendly Customer Interface and Control Menu
- High storage capacity EEPROM
- Very High Speed XLP (Extra Low Power) 8-bit Processor to ensure Low Consumption
- Software for PC enabling Statistical Analysis at your office and storage of data on your PC
- GSM/GPRS Remote Access and Data Transfer (Telemetry) - Optional
- Min. 150mW Consumption during operation enabling long battery operation 20mW Consumption during Sleep Mode Operation
- 30 Days Operation Cycle on 7500mAh Battery with 10% Wake up Ratio
- BITE (Built-in Test Equipment) automatically Fixing problems and/or Warning Messages on LCD and Collecting data on erroneous sales

Your  
reliable  
**OEM**  
Manufacturer



### Physical Features



#### Electrical Features:

##### Operating Voltage:

With Cooling : 220 V AC + %10 - 50 Hz

Without Cooling : 90-260 V AC -50-60 Hz

##### Power:

Without Cooling : 50 W

With Cooling : 100 W

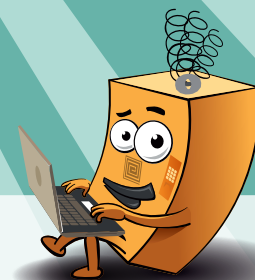


Since 1978

Izmir Ataturk Industrial Zone

M. Kemal Ataturk Blv. 23-25 Cigli, 35620 Izmir / TURKEY

Tel: +90 232 376 7300 Faks: +90 232 376 7030 [elektral@elektral.com.tr](mailto:elektral@elektral.com.tr)



[www.elektral.com.tr](http://www.elektral.com.tr)